
	Issued by: Datataker	Date of issue: 07/04/2009	Document no: UM0091	Rev: A0
	Title: Configuration Tool - SMSX ETM9560 - USER GUIDE			Page: 1(6)

© Biolab (Aust) P/L, File: UM0091A0 - SMSX CONFIGURATION TOOL USERGUIDE.DOC

## Configuration Tool - SMSX ETM9560 - USER GUIDE

Section	Content
1	<a href="#">Document History</a>
2	<a href="#">Introduction</a>
3	<a href="#">Configuration Tool Installation</a>
4	<a href="#">Use the configuration tool to configure the wireless modem</a>
5	<a href="#">Saving, reading and writing configuration files</a>
6	<a href="#">Serial COM</a>
7	<a href="#">Terminal</a>

	Issued by: Datataker	Date of issue: 07/04/2009	Document no: UM0091	Rev: A0
	Title: Configuration Tool - SMSX ETM9560 - USER GUIDE			Page: 2(6)

© Biolab (Aust) P/L, File: UM0091A0 - SMSX CONFIGURATION TOOL USERGUIDE.DOC

## 1. DOCUMENT

### 1.1. HISTORY

**Rev: A0 Date of issue: 6 April 2009**

First issue

### SOFTWARE VERSIONS

**Rev: Etm9560 SW956B052R01 20090310 CT0305 DT Date of issue: 2009-03-10**

This is the first release version of the product.

## 2. INTRODUCTION

This document describes how to use the SMS ETM9560 configuration tool. Normally you would not need to use this tool as the SMSX has been preconfigured. If for some reason or as directed by dataTaker technical support you do need to change the configuration or reload the default configuration this guide can help you.


The default configuration file is supplied on the resource CD supplied with the modem and is also available from the downloads page of the dataTaker web site.

The default configuration file has the file name 'SMSX-80-ETM9560-V3.05.04DT-DefaultSettings.etx'

## 3. CONFIGURATION TOOL INSTALLATION

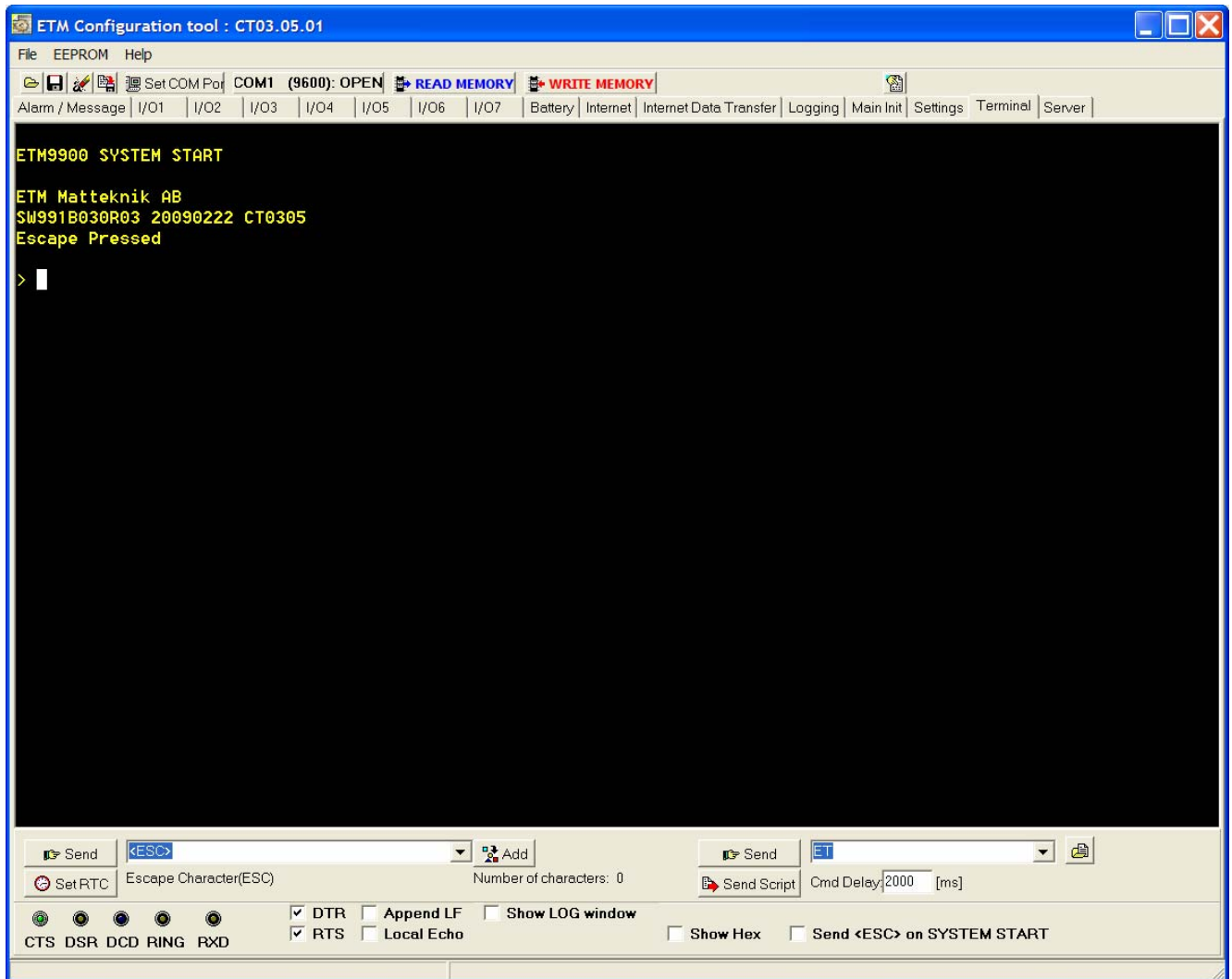
The Configuration Tools can be copied to any folder on the PC's hard drive. It consists of only one file and does not need to be installed. Depending on your use of the tool there may (over a period of time) be configuration files, with an etx extension, created and these files can be saved in any location. The tool itself may create a single ini file which should be left in the same directory as the configuration tool for continued easy operation of the tool.

The wireless modem should be connected to the PC with a standard 9 pin serial (pc to modem) cable – the wireless modem is configured as a DCE (Data Communication Equipment).

	Issued by: Datataker	Date of issue: 07/04/2009	Document no: UM0091	Rev: A0
	Title: Configuration Tool - SMSX ETM9560 - USER GUIDE			Page: 3(6)

© Biolab (Aust) P/L, File: UM0091A0 - SMSX CONFIGURATION TOOL USERGUIDE.DOC


## 4. USE THE CONFIGURATION TOOL TO CONFIGURE THE WIRELESS MODEM



When you power up the wireless modem to do any configuration you **MUST** follow these steps;

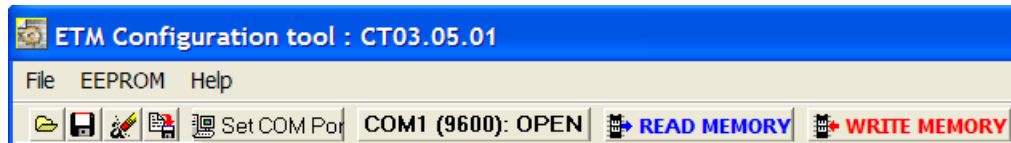
- Start the configuration tool
- Chose the correct communications port – leave every setting other than the actual port as they are
- Confirm that the port opens (the indicator **MUST** show 'OPEN' for your chosen port)
- Click on the Terminal Tab
- Click into the black terminal window so that you see a flashing white cursor
- Power up the wireless modem (remember to plug the power into the correct socket – it is the one next to the antenna lead)
- Press the ESC key on the keyboard, you should only need to press it 3 or 4 times, and after a short period you should see the 'Escape Pressed' message – if you don't and instead you see 'MS:^SYSSTART' message then repeat the process again. Without the 'Escape Pressed' message being displayed you **CANNOT** perform any configuration on the wireless modem (while it is possible to use the Configuration Tool once the wireless modem has fully started up this may not be possible if the wireless modem has not yet been fully configured).

You are now ready to use the configuration tool.

	Issued by: Datataker	Date of issue: 07/04/2009	Document no: UM0091	Rev: A0
	Title: Configuration Tool - SMSX ETM9560 - USER GUIDE			Page: 4(6)

© Biolab (Aust) P/L, File: UM0091A0 - SMSX CONFIGURATION TOOL USERGUIDE.DOC

## 5. SAVING, READING AND WRITING CONFIGURATION FILES



### File (Menu Option)

- Select “File – Open” to open an existing configuration file.
- Select “File – Save” to save a configuration file after you have read an existing configuration from a device or when you have manually entered a configuration.
- The configuration tool’s current settings can be written to the wireless modem by selecting “WRITE MEMORY” – this is the button with the RED text.


Note: You cannot perform a write operation if you have not opened an existing configuration file or performed a read operation.

- To read the current settings of the wireless modem select “READ MEMORY” – this is the button with the BLUE text.
- “ComPort <Open> or <Closed>” can be used to control whether or not the communications port is opened (You must have the communications port open to connect in any way to the wireless modem).

This allows you to leave the configuration tool open but not connected to the serial port in case you need to use another communications application such as HyperTerminal<sup>®</sup>

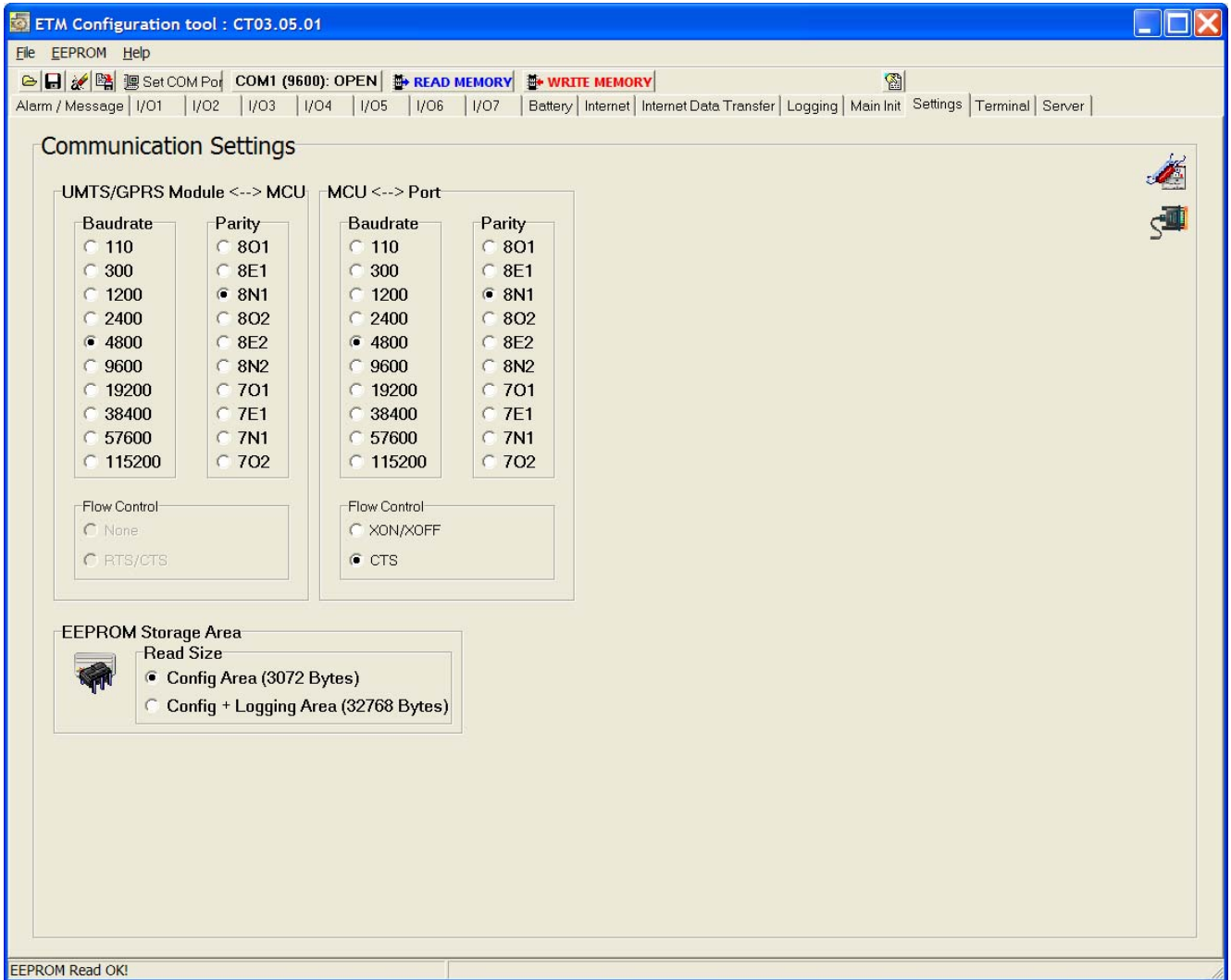
The selected baud rate for the COM port is displayed in brackets when the port is opened.

Note: If the unit is busy a read or write may fail and a popup will inform you of the error. You can retry the read or write but if it continues to fails follow the steps to access the configuration screen in [Terminal](#).

	Issued by: Datataker	Date of issue: 07/04/2009	Document no: UM0091	Rev: A0
	Title: Configuration Tool - SMSX ETM9560 - USER GUIDE			Page: 5(6)

© Biolab (Aust) P/L, File: UM0091A0 - SMSX CONFIGURATION TOOL USERGUIDE.DOC

## 6. SERIAL COM



### Communication Modem Settings


- Module <--> MCU should match MCU <--> Port.
- MCU <--> Port sets the serial port on the wireless modem and should be adjusted to suit your device connected to the port.

### Flow Control

- Presently only CTS Flow Control is supported

### EEPROM Storage Area

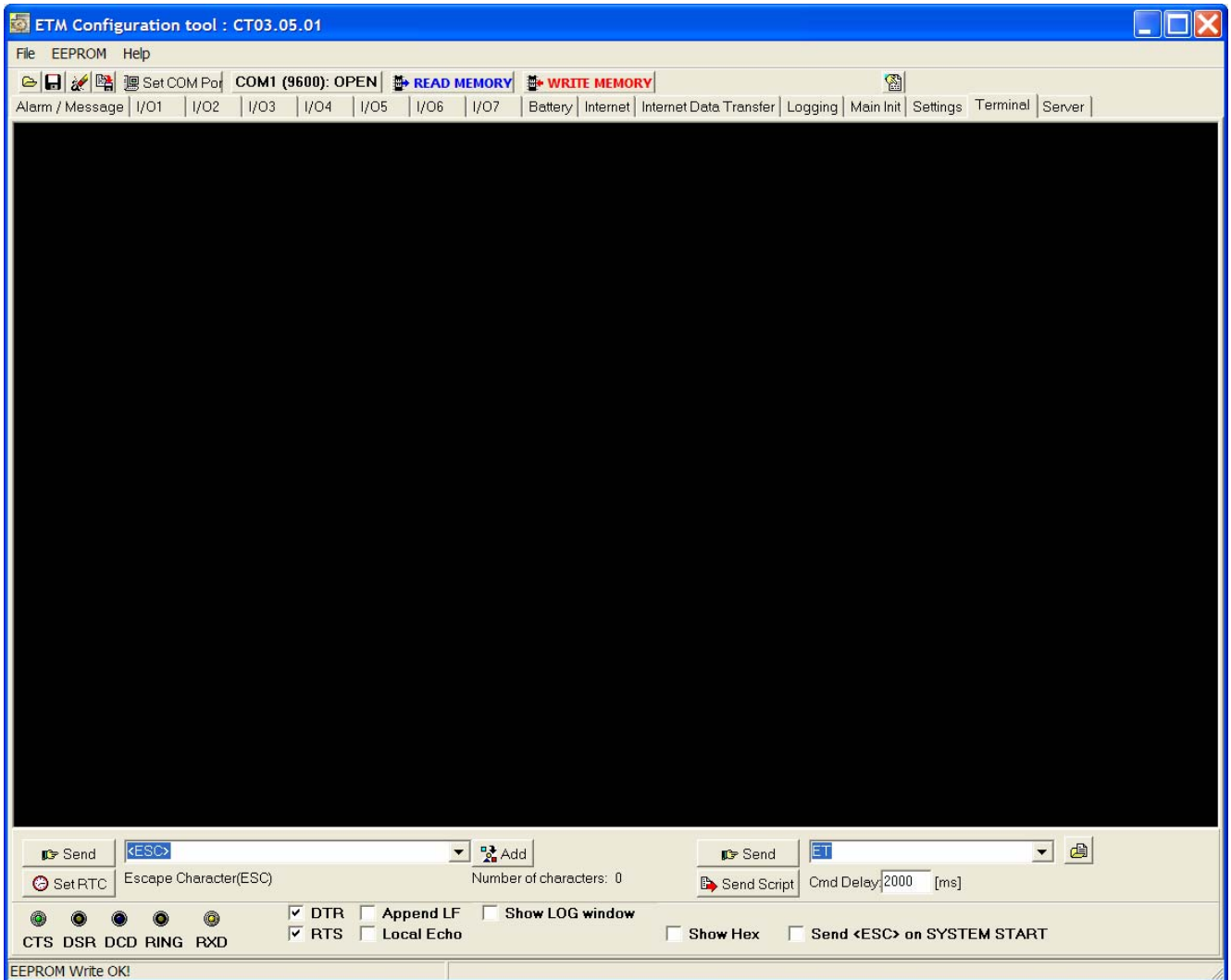
- Presently this should be configured to 'Config Area'

	Issued by: Datataker	Date of issue: 07/04/2009	Document no: UM0091	Rev: A0
	Title: Configuration Tool - SMSX ETM9560 - USER GUIDE			Page: 6(6)

© Biolab (Aust) P/L, File: UM0091A0 - SMSX CONFIGURATION TOOL USERGUIDE.DOC

## 7. TERMINAL

In the terminal window you can see the output from the unit and type commands to the unit. Note : Remember to place the cursor inside the window before you type any commands.



### Entering command mode

- Place the cursor inside the black window and press “escape” to stop the start up sequence. You may also issue ET-commands in operation mode but the unit might be busy and fail to execute the command. Make sure to set baud rate to 9600 for the escape sequence to work.

### Send – commands

- You can select a number of predefined commands by using the drop down menu. Not all commands are listed here. Note that each command has a short description. For full details refer to the ET Command list document..