



Securing the dataTaker DT80 Series Web Services

1 Settings changes (dEX)

NOTE: The changes specified in this document require your logger to be running firmware version 9.08 or above.

If your logger was configured using dEX, then the security settings are all located on security tab (click on the model number at the top of the tree, then Security tab).

1.1 Password protect the inbuilt FTP server

The FTP server is one of the two key methods for changing settings on your logger. The most important change when locking down the dataTaker web services is to prevent unauthorised access to this server. The recommended action here is to change the default FTP username and password and disable anonymous access.

1.2 Password protect the command port

Adding a password prevents your logger from accepting unauthorised commands. Once a password is set and the user is signed off the logger will not respond to commands. To access the command interface on a password protected logger, you must type the password then press enter. The command window is available within in the 'monitor the logger' interface.

The delay before locking period determines the timeout on the command interface, when this time expires the user will need to re-enter the password.



2 Settings changes (Command Language)

The below commands are equivalent to those mentioned in the previous section and should be put within a jobs code so that they are re-instated if the power to the logger is cycled

```
PROFILE FTP_SERVER ALLOW_ANONYMOUS=NO
PROFILE FTP_SERVER USER=DATATAKER
PROFILE FTP_SERVER PASSWORD=NEWPASSWORD

P14=120 'delay before locking
PASSWORD="MYPASSWORD"
```

NOTE: The above commands.

3 Limit access to the 'Monitor the Logger' interface

The *monitor the logger* interface is configured from the *Customise dEX* menu on logger home page.

3.1 Hide certain diagnostic features to keep the FTP password safe

Enter the settings as shown on the right for each of the menus. These will remove some parts of the web interface where a user might be able to view profile settings and see the FTP password.

The local documents link will not work because we have removed the FTP anonymous user so it should also be removed.

Save the changes by clicking **Save Settings**

Status menu items

Include 'Welcome' menu

Include 'Schedule' menu

Include 'Storage' menu

Include 'Diagnostics' menu

Include 'Program' menu

Include 'Parameters' menu

Include 'Profile' menu

Include 'Switches' menu

Retrieve menu items

Include 'Basic retrieve' menu

Include 'Advanced retrieve' menu

Command menu item

Include 'Command' menu

Help menu items

Include 'This interface' menu

Include 'Video tutorials' menu

Include 'Local documents' menu

Include 'Datataker web-site' menu

Include 'Technical support' menu

Lock mimics

Allow changes to mimics

Lock full-screen mode

Allow full-screen mode

3.2 Prevent editing of mimics

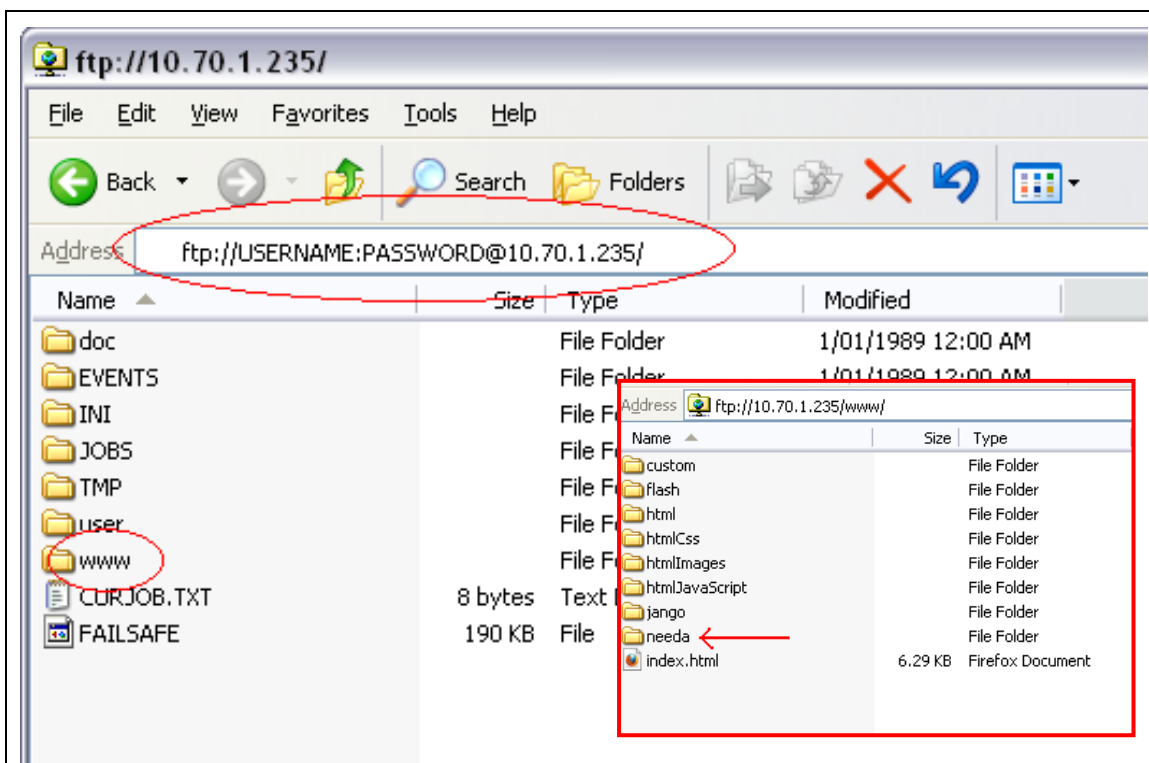
After you have added all of the mimics you wish to use in the web interface, you will want to prevent users from changing them. To do this, you will need to re-enter the *Customise dEX* menu and untick the box next to **Allow changes to mimics** in the *Security* page.

Save the changes by clicking **Save Settings**



4 Hiding the ‘Logger Home’ menu items

Now that all of the settings have been saved, you will want to hide the **Customise dEX** menu. To do this, open Windows Explorer and log into your dataTakers FTP server. Use the IP address of your logger, user name and password you created in the profile earlier.



Once logged in, open the **WWW** folder and rename the folder ‘needa’ to anything else (eg. needa1234). Next time the logger home screen is shown the **Customize dEX** menu will not be shown and will not be accessible (it may be necessary to clear the browser cache for this page to reload correctly). It is also possible to hide the **Configure the logger** menu item using the same process but renaming the folder “jango” instead of “needa”.